

*Marshall*

**ORIGIN 20**  
**ORIGIN 50**  
**USER MANUAL**

**MARSHALL.COM**



# **CONGRATULATIONS ON PURCHASING YOUR MARSHALL ORIGIN AMPLIFIER.**

**THE ORIGIN PROVIDES USEFUL MODERN FEATURES INCLUDING: TILT TONE CONTROL, TO BLEND BETWEEN TWO DISTINCTLY DIFFERENT VOICES, AND AN EMULATED OUTPUT FOR THOSE LOOKING TO RECORD DIRECTLY.**

**WE HOPE YOU ENJOY YOUR NEW ORIGIN AS MUCH AS WE HAVE ENJOYED DESIGNING AND BUILDING IT FOR YOU.**

**THE MARSHALL TEAM**

**Warning:** Before going any further, make sure that your amplifier is compatible with your mains electricity supply. If you have any doubt, please seek help from a qualified technician – your Marshall dealer can help you with this.

#### **MAINS INPUT & FUSE:**

The specific mains input voltage rating that your amplifier has been manufactured for is indicated on the rear panel. Your amplifier is provided with a detachable mains (power) lead, which should be connected to the mains input socket on the rear panel. The correct value and type of mains fuse is specified on the rear panel.

Never attempt to bypass the fuse or fit one of the incorrect value or type.

#### **IMPORTANT SET UP INFORMATION:**

1. When using your Origin with an extension speaker cabinet(s), make sure that the speaker cabinet(s) is connected to the correct loudspeaker jack socket(s). See section 4.1, 4.2 and 4.3 for specific information.

**Warning:** failure to do the above may damage your amplifier. When connecting a speaker cabinet make sure that you use a proper speaker cable. Never use a screened (shielded) guitar cable for this purpose.

2. Ensure that the power switch is set to the off position (front panel function 3.1).
3. Connect the supplied mains (power) lead into the mains input on the rear panel first and then into an electricity outlet.

4. Ensure that the volume controls on the front panel are set to zero.
5. Plug your guitar into the input jack socket on the front panel.
6. Select either *high*, *mid* or *low* power (front panel function 3.2).
7. Turn the front panel switch on and wait a couple of minutes.
8. Turn the volume up to your preferred level and your amplifier is ready to play.

#### **TRANSPORTING YOUR EQUIPMENT:**

Please ensure that your amplifier is switched off, unplugged from the mains electricity supply and all removable cables have been disconnected from your equipment before attempting to move it.

# 1.0

## **WARNING! SAFETY INSTRUCTIONS**

**PLEASE READ THIS MANUAL CAREFULLY BEFORE PLUGGING IN. FOLLOW ALL INSTRUCTIONS AND HEED ALL WARNINGS.**

**Available in both 20W and 50W power outputs and as either a head or combo, every Origin has been designed to offer the perfect solution for players looking to create great music.**

The tone of the Origin amplifier is unmistakably Marshall using 3x ECC83 preamp valves and 2x EL34 power valves to generate rich harmonics and exceptional tone. While the amplifier is a single channel unit, the design of the tone circuit means it offers two very distinctive voices. Accessing your preferred sound can be easily achieved using the inbuilt *tilt* control which when turned fully counter clockwise will access a subtler tonal structure. Dialling the *tilt* control fully clockwise will increase the brightness of sound for a more cutting tone. A *presence* control also allows fine tuning of your tone in the power stage for even greater tonal detailing.

The combo enclosures and speaker choices have been carefully selected to bring out the natural valve tone with the 20W combo being loaded with a Celestion V Type 10" speaker and the 50W Combo using a Celestion Midnight 60 12" speaker.

Additional functionality such as the foot switch *gain boost*, *effects loop*, and ability to run the amplifiers without a speaker load, make the Origin range exceptional for the modern player.

## ORIGIN 20

### VALVES

3x ECC83 + 2x EL34

### SPEAKER

Celestion V Type 10"  
(Combo only)

### POWER CONTROL

3 way switchable  
High, mid and low

### TILT CONTROL

Single channel control  
Adjust between *normal* and *high treble*

### EQUALISATION

Treble, middle and bass

### FOOTSWITCHABLE FEATURES

Effects loop  
Gain boost

## ORIGIN 50

### VALVES

3x ECC83 + 2x EL34

### SPEAKER

Celestion Midnight 60 12"  
(Combo only)

### POWER CONTROL

3 way switchable  
High, mid and low

### TILT CONTROL

Single channel control  
Adjust between *normal* and *high treble*

### EQUALISATION

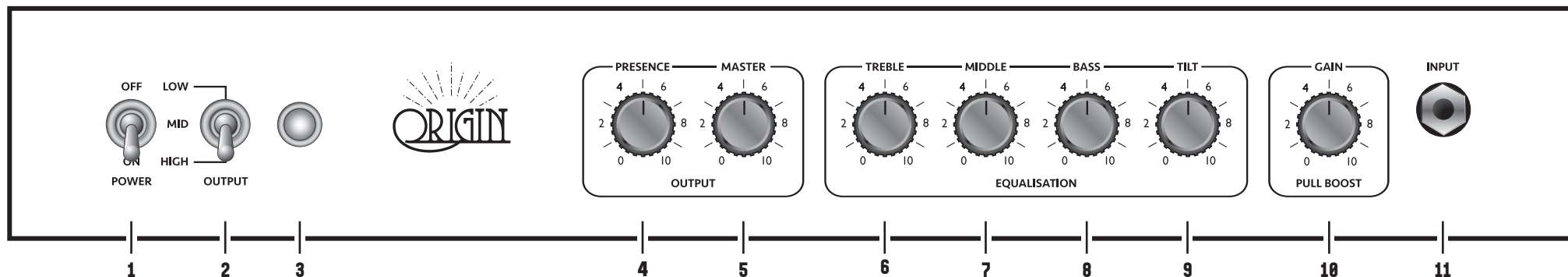
Treble, middle and bass

### FOOTSWITCHABLE FEATURES

Effects loop  
Gain boost

# 2.0 OVERVIEW AND SPECIFICATION

## ORIGIN HEAD (COMBO SHOWN ON NEXT PAGE)

**1. POWER SWITCH**

Turns your amplifier on and off.

**2. OUTPUT LEVEL**

Adjusts the output power level. At *high* power the output will be the maximum available power level. At *mid* power the output of the amplifier is set for quieter performance use and recording (ORI20: approx. 3W / ORI50: approx. 10W). At *low* power the output will be reduced for home practice (ORI20: approx. 0.5W / ORI50: approx. 0.5).

**Note:** reducing the power output allows you to drive the power stage harder at low volumes. This provides the ability to benefit from the rich tonal qualities that a valve power amp can create without the need to operate at loud volume levels.

**3. POWER LIGHT**

When the unit is switched on this light will illuminate.

**4. PRESENCE**

Adjusts the response of the power amplifier increasing the higher frequencies of your sound.

**5. MASTER VOLUME**

Adjusts output volume. At higher settings, the power amplifier can be overdriven, giving a classic overdrive sound.

**EQ Settings:** your Origin amplifier has 4 equalisation controls (*presence*, *treble*, *middle* and *bass*) plus an amplifier channel voice control (*tilt*). All these controls allow you to adjust the frequency and voicing. Each control is highly effective and interactive.

**6. TREBLE**

Controls the higher frequency of your sound.

**7. MIDDLE**

Controls the middle frequency of your sound.

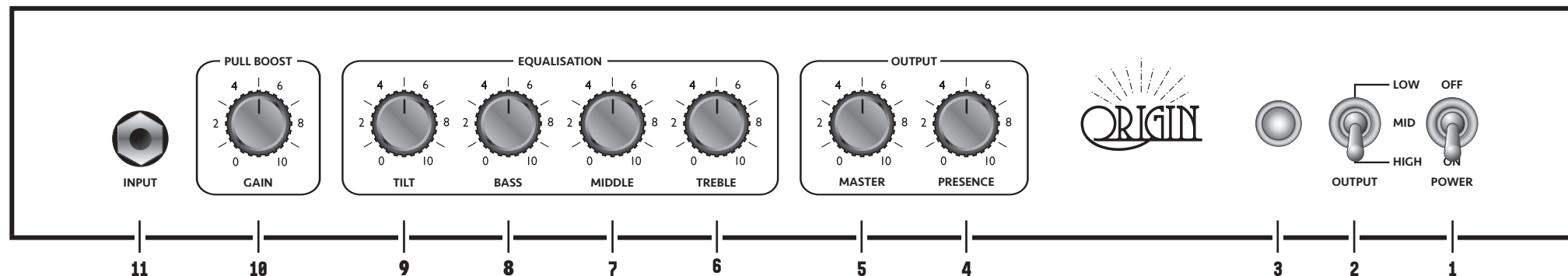
**8. BASS**

Controls the lower frequency of your sound.

# 3.0 FRONT PANEL FUNCTIONS

THE INFORMATION SHOWN APPLY TO BOTH 20 AND 50, HEAD AND COMBO FORMATS.

## ORIGIN COMBO (HEAD SHOWN ON PREVIOUS PAGE)

**9. TILT**

Adjusts the voice of your Origin from *normal* to *high treble* at the input stage.

**Tilt:** this control provides a blend between *normal* and *high treble* pre-amplifier channels on a classic Marshall. Dialed all the way to the left the sound is warm and full, providing a thick overall tone. When dialed all the way to the right the overall tone is brighter for players looking for more cut through and bite. When set at 12 o'clock the *tilt* control provides an equal blend of both pre-amp voicings.

**10. GAIN**

Controls the amount of pre-amp gain applied to your sound, the more gain the more distortion. Pulling the control knob activates a *gain boost* increasing the level of drive in the pre-amp. This can be operated using a 2-way foot switch (PEDL-90016).

**Note:** when a foot switch is connected it will override the front panel control meaning the *gain boost* can only be turned on and off using the foot switch.

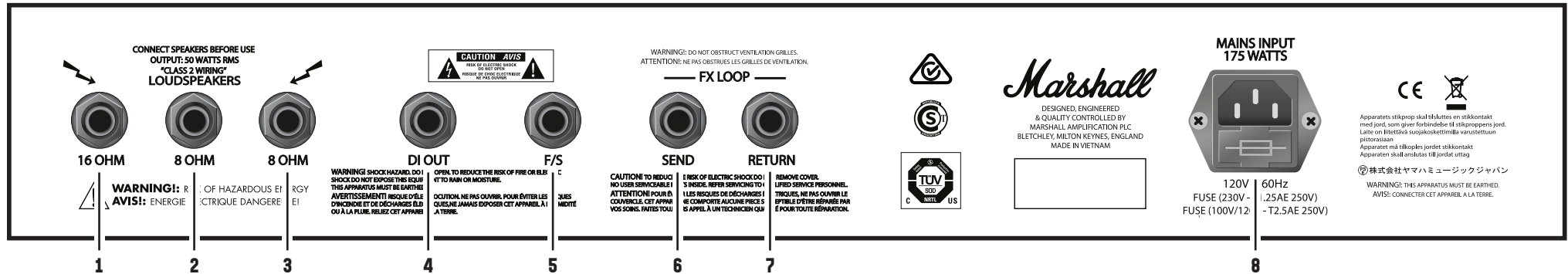
**11. INPUT**

Connect your guitar to the amplifier using a ¼" instrument cable.

# 3.0

## FRONT PANEL FUNCTIONS CONTINUED

THE INFORMATION SHOWN APPLY TO BOTH 20 AND 50, HEAD AND COMBO FORMATS.



### 1. 16 OHM OUTPUT

#### ORI20 and ORI50 head

Connect a single 16 OHM speaker cabinet using this socket.

#### ORI20 combo

Your Celestion V type 10" speaker is connected here.

#### ORI50 combo

Your Celestion Midnight 60 12" speaker is connected here.

### 2 & 3. 8 OHM OUTPUT

Connect an 8 OHM cabinet using socket #3, or connect a pair of 16 OHM speaker cabinets to sockets #2 and #3.

**Note:** before connecting and disconnecting speaker loads, always ensure that the amplifier is switched off.

### 4. DI-OUTPUT

Connect your amplifier to an external recording device or sound desk using this output socket with added loudspeaker emulation.

### 5. FOOT SWITCH

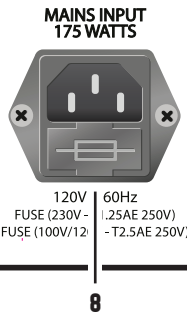
Connect a 2-way foot switch (PEDL-90016) to control the *gain boost* and turn the *effects loop* on and off.

### 6. EFFECTS LOOP SEND

Sends your signal to your effects or outboard processor.

### 7. EFFECTS LOOP RETURN

Returns your signal from your effects or outboard processor.



### 8. MAINS INLET

Connect your amplifier to the supplied mains lead using this socket.

# 4.0 REAR PANEL FUNCTIONS

**WHILST THE INFORMATION CONTAINED HEREIN IS CORRECT AT THE TIME OF PUBLICATION, DUE TO ITS POLICY OF CONSTANT IMPROVEMENT AND DEVELOPMENT, MARSHALL AMPLIFICATION PLC RESERVES THE RIGHT TO ALTER SPECIFICATIONS WITHOUT PRIOR NOTICE.**

**MARSHALL AMPLIFICATION PLC,  
DENBIGH ROAD,  
BLETCHLEY, MILTON KEYNES,  
MK1 1DQ, ENGLAND.**

**T: +44 (0) 1908 375411  
F: +44 (0) 1908 376118**

**MARSHALL AMPLIFICATION PLC  
REGISTERED IN ENGLAND  
REGISTERED NUMBER: 805676**

**BOOK-91024-V.01-20 NOVEMBER 2017**

The Marshall logo is a black square with the word "Marshall" written in a white, cursive script font in the center.

*Marshall*